


# FISHWAY STATUS REPORT

Date: 11/21/2015  
 Inspection Period: 11/15/2015 thru 11/21/2015

All JD Fishways are inspected twice per day during fish season, Mar. 1 - Nov. 30  
 Frequent monitoring of the PLC displays in SMF Fisheries Office as necessary.



**US Army Corps  
of Engineers**  
Portland District

**JOHN DAY DAM**

JD/WC Project-Fisheries  
 P.O. Box 823  
 Rufus, Oregon 97050  
 Phone: 541-506-7860

John Day Dam	Inspections	Criteria	Total Number of Inspections: 14	Temperature: 53 F
	Out of Criteria	Limit		Secchi: 6.0 Ft.
<b>NORTH FISHWAY</b>			4 out of 6 AWS pumps available since 12/23/14	
Exit differential	0	≤ 0.5'		
Exit Control weirs	0	High setting	High setting is normal for JDN	
Count station differential	0	≤ 0.3'		
Weir crest depth (DS gauge)	0	1.0' ± 0.1'		
Entrance differential	0	1.0' - 2.0'	AVG 1.5	
<b>SOUTH FISHWAY</b>			3 AWS Turbines in regular service since 2/28/15	
Exit differential	0	≤ 0.5'		
Exit Control weirs	0	High Setting	high setting since 10/18/15 due to high Forebay, above 265.0'	
Count station differential	0	≤ 0.3'		
Weir crest depth (US gauge)	0	1.0' ± 0.1'		
South entrance differential	0	1.0' - 2.0'	AVG 1.6	
Entrance weir SE1	0	depth (≥ 8')	AVG 8.8	
Collection channel velocity	0	1.5 - 4 fps	AVG 3.04	
N. Entrance PH(Bay 19)differential	0	1.0' - 2.0'	AVG 1.2	
Entrance weir NE1	0	depth (≥ 8')	AVG 8.2	
Entrance weir NE2	0	depth (≥ 8')	AVG 8.2	
<b>JUVENILE PASSAGE</b>			2015 SMF sampling season ended 9/15; the facility continues in bypass through 11/24	
Forebay/bypass conduit differential	0	4.0' - 5.0'	AVG 4.6	
Submersible traveling screens	0	visual inspect	Camera inspection of all STSs: 3 bad screens were replaced with working spares 10/22	
Turbine trashrack drawdown	0	<1.5', wkly	MU trashracks' raking as necessary per the differentials	
Vert barrier screen drawdown	0	<1.5', wkly		
Spill volume	0	Bay2 & 1.6K	Spill season ended on 9/1. Bay 2 open at 1.6 K for JDN attraction, daylight hours only	
Spill pattern	0	per FPP		
Turbine Unit Priority	0	per FPP		
Turbine 1% Efficiency	0	per FPP		

## SMOLT MONITORING FACILITY

**Operation:**

Sampling season ended on 9/15; SMF will continue in bypass for the full flow PIT tags detections until 24 November.  
JD Fisheries crew works an abbreviated 18 hrs/7 swing shift schedule as required by FPP.

**Maintenance:**

Porosity Unit/Separator's painting completed on 10/15; the reinstallation of dewatering all done by the end of October.

**Research:**

None

**Fallbacks:**            **AVG:**                            **MAX:**    0                            **MIN:**    0

## OTHER JOHN DAY ISSUES:

**Birds :**

see the Avian Numbers tab. We report all species and locations, but in reality only gulls in the tailrace BRZ are relevant at JD.  
Spillway Avian Line 68 snapped on approx. 10/31. 12 lines are missing out of 125 total at this time.  
The following avian lines have snapped this season and are out of commission: 44, 45, 46, 52, 53,55, 56, 57, 60 and 68.  
Lines 25 and 26 have been missing since 2013; their re-install contract was awarded on 9/30/15.

**Operations:**

JD North Fishway in regular service; 5 out of 6 AWS pumps are available. Repair work on pump 4 continues; pump 3 has vibration issues and should be the last last in service.

JD South Fishway in regular service with 3 AWS Turbines; it is meeting the optimal FPP criteria.

MU Gatewell Drawdowns: Differentials are checked Wednesdays and Sundays; all gatewells were in criteria.

**Maintenance:**

JD North AWS pumps: four out of total six are available. Repair of AWS pump # 4 by a contractor started on 1/26 & is ongoing.

Calibration: All gauges/ sensors are within the criteria of 0.3' .

**Research:**

2015 Adult Fish Counting by Normandeau Associates commenced on 1 April, 2015 and will continue daily through 1 November.

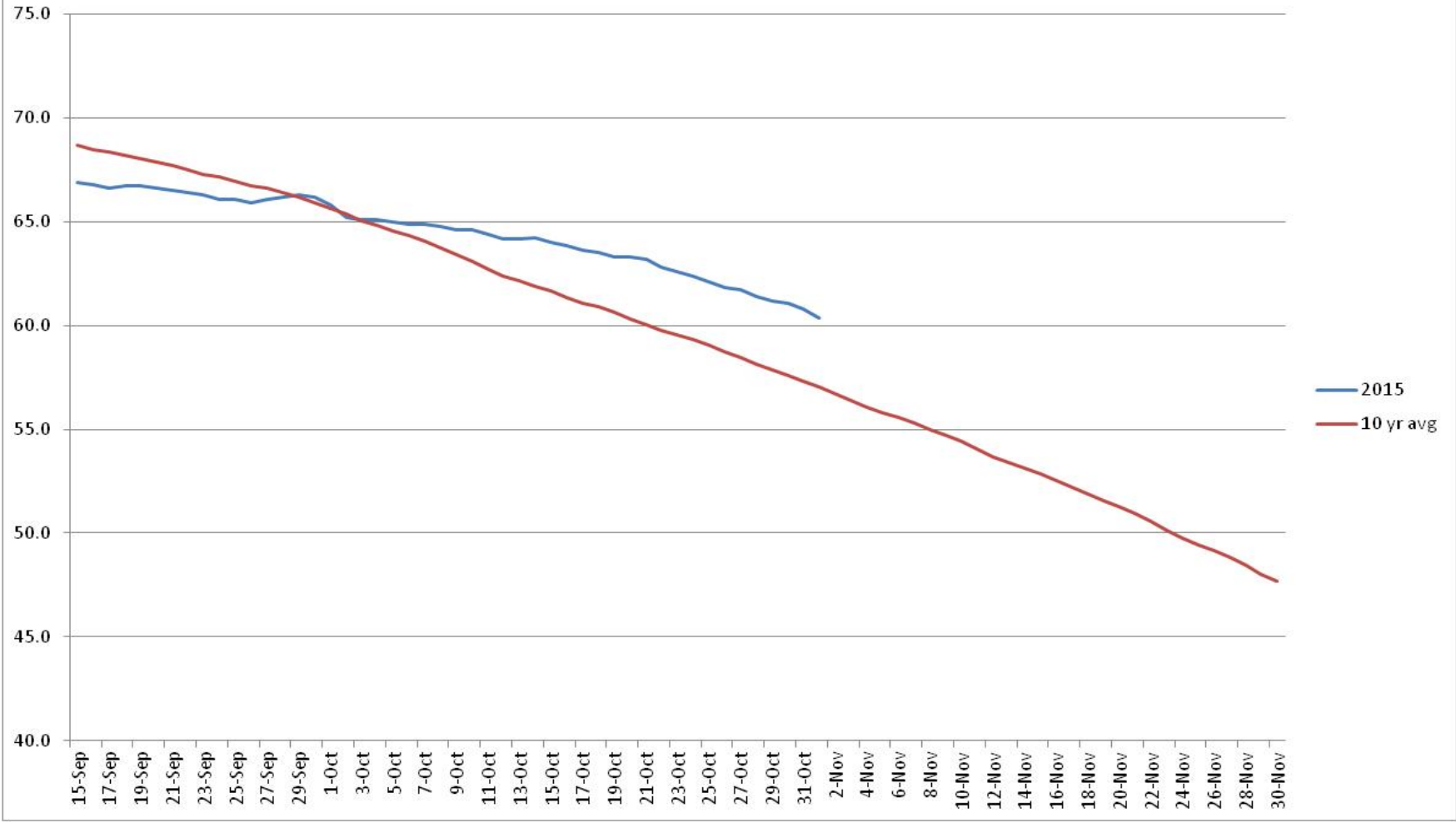
Proposal by PSMFC to install Adult PIT antennas at both JD Fishways is at the design/PDT level.

Kevin Moynahan  
OPM John Day/Willow Creek Project

**Date:**            November 21, 2015

E-Signed by MOYNAHAN,KEVIN.PATRICK,1393959157  
VERIFY authenticity with Approval  
MOYNAHAN,KEVIN.PATRICK,1393959157

### John Day TW Temperature



## JDA Collection Channel Velocity

Date 24-Oct-15

By: pete

Bay(s)	Time	Sec.	Velocity (f/s)
0-2	1:27	87	2.07
2 - 4	2:28	148	2.95
4 - 6	3:31	211	2.86
6 - 8	4:32	272	2.95
8 - 10	5:32	332	3.00
10 - 12	6:31	391	3.05
12 - 14	7:30	450	3.05
14 - 16	8:29	509	3.05
16 - 18	9:10	550	4.39
			<b>3.04</b>

**JDA Bird Counts: 11/8/15 to 11/14/15**

F(1): Forage AM survey F(2): Forage PM Survey NF(1): Non-Forage AM Survey NF(2): Non-Forage PM Survey

Date	Zone	Gulls				Cormorant				Caspian tern				White Pelican				Grebe				Total
		F(1)	F(2)	NF(1)	NF(2)	F(1)	F(2)	NF(1)	NF(2)	F(1)	F(2)	NF(1)	NF(2)	F(1)	F(2)	NF(1)	NF(2)	F(1)	F(2)	NF(1)	NF(2)	
8-Nov	PHFB	0	0	182	540	0	0	0	0	0	0	0	0	0	0	0	0	15	5	110	20	872
8-Nov	SWFB	0	0	970	985	0	5	0	13	0	0	0	0	0	0	0	0	0	0	0	0	1973
8-Nov	PH1	23	7	0	10	2	3	0	0	0	0	0	0	0	0	0	0	0	0	0	0	45
8-Nov	PH2	0	0	0	0	0	0	0	0	0	0	0	0	0	0	0	0	0	0	0	0	0
8-Nov	PH3	0	0	0	0	0	0	0	0	0	0	0	0	0	0	0	0	0	0	0	0	0
8-Nov	SW1	0	0	0	0	0	0	0	0	0	0	0	0	0	0	0	0	0	0	0	0	0
8-Nov	SW2	0	0	0	0	0	0	0	0	0	0	0	0	0	0	0	0	0	0	0	0	0
8-Nov	SW3	0	0	0	0	0	0	0	0	0	0	0	0	0	0	0	0	0	0	0	0	0
Avg/Survey		15		1344		5		7		0		0		0		0		10		65		2890
9-Nov	PHFB	0	0	775	1270	0	0	0	0	0	0	0	0	0	0	0	0	0	13	119	30	2207
9-Nov	SWFB	0	0	1090	1130	0	0	0	0	0	0	0	0	0	0	0	0	0	0	0	0	2220
9-Nov	PH1	9	49	0	0	0	4	0	0	0	0	0	0	0	0	0	0	0	0	0	0	62
9-Nov	PH2	0	0	0	0	0	0	0	0	0	0	0	0	0	0	0	0	0	0	0	0	0
9-Nov	PH3	0	0	0	0	0	0	0	0	0	0	0	0	0	0	0	0	0	0	0	0	0
9-Nov	SW1	0	0	0	0	1	0	0	0	0	0	0	0	0	0	0	0	0	0	0	0	1
9-Nov	SW2	0	0	0	0	0	0	0	0	0	0	0	0	0	0	0	0	0	0	0	0	0
9-Nov	SW3	0	0	0	0	0	0	0	0	0	0	0	0	0	0	0	0	0	0	0	0	0
Avg/Survey		29		2133		3		0		0		0		0		0		7		75		4490
10-Nov	PHFB	0	0	770	1300	0	0	0	0	0	0	0	0	0	0	0	0	19	17	100	70	2276
10-Nov	SWFB	0	0	655	695	0	0	0	0	0	0	0	0	0	0	0	0	0	0	0	0	1350
10-Nov	PH1	2	37	0	0	0	8	0	0	0	0	0	0	0	0	0	0	0	0	0	0	47
10-Nov	PH2	0	15	0	0	0	7	0	0	0	0	0	0	0	0	0	0	0	0	0	0	22
10-Nov	PH3	0	0	0	0	0	0	0	0	0	0	0	0	0	0	0	0	0	0	0	0	0
10-Nov	SW1	0	0	0	0	1	0	0	0	0	0	0	0	0	0	0	0	0	0	0	0	1
10-Nov	SW2	0	0	0	0	0	0	0	0	0	0	0	0	0	0	0	0	0	0	0	0	0
10-Nov	SW3	0	0	0	0	0	0	0	0	0	0	0	0	0	0	0	0	0	0	0	0	0
Avg/Survey		27		1710		8		0		0		0		0		0		18		85		3696
11-Nov	PHFB	0	###	427	0	0	1	6	0	0	0	0	0	0	0	0	0	0	0	166	85	1788
11-Nov	SWFB	0	0	457	0	0	0	0	0	0	0	0	0	0	0	0	0	0	0	0	0	457
11-Nov	PH1	0	0	7	1	3	1	0	1	0	0	0	0	0	0	0	0	0	0	0	0	13
11-Nov	PH2	1	0	0	2	0	0	0	0	0	0	0	0	0	0	0	0	0	0	0	0	3
11-Nov	PH3	11	0	0	0	0	0	23	8	0	0	0	0	0	0	0	0	0	0	0	0	42
11-Nov	SW1	0	0	1	0	0	0	0	0	0	0	0	0	0	0	0	0	0	0	0	0	1
11-Nov	SW2	0	0	1	0	0	0	0	0	0	0	0	0	0	0	0	0	0	0	0	0	1
11-Nov	SW3	1	0	0	0	0	0	0	58	0	0	0	0	0	0	0	0	0	0	0	0	59
Avg/Survey		558		448		3		48		0		0		0		0		0		126		2364

**JDA Bird Counts: 11/8/15 to 11/14/15**

F(1): Forage AM survey F(2): Forage PM Survey NF(1): Non-Forage AM Survey NF(2): Non-Forage PM Survey

Date	Zone	Gulls				Cormorant				Caspian tern				White Pelican				Grebe				Total
		F(1)	F(2)	NF(1)	NF(2)	F(1)	F(2)	NF(1)	NF(2)	F(1)	F(2)	NF(1)	NF(2)	F(1)	F(2)	NF(1)	NF(2)	F(1)	F(2)	NF(1)	NF(2)	
12-Nov	PHFB	0	0	223	16	0	0	17	0	0	0	0	0	0	0	0	0	0	0	0	164	420
12-Nov	SWFB	0	0	457	345	0	0	0	0	0	0	0	0	0	0	0	0	0	0	0	0	802
12-Nov	PH1	0	19	7	0	5	2	0	0	0	0	0	0	0	0	0	0	0	0	0	0	33
12-Nov	PH2	1	0	0	0	0	0	0	0	0	0	0	0	0	0	0	0	0	0	0	0	1
12-Nov	PH3	6	4	0	0	13	0	0	0	0	0	0	0	0	0	0	0	0	0	0	0	23
12-Nov	SW1	0	0	0	0	0	0	0	0	0	0	0	0	0	0	0	0	0	0	0	0	0
12-Nov	SW2	0	0	0	0	3	0	0	0	0	0	0	0	0	0	0	0	0	0	0	0	3
12-Nov	SW3	1	0	0	0	0	0	0	58	0	0	0	0	0	0	0	0	0	0	0	0	59
Avg/Survey		16		524		12		38		0		0		0		0		0		82		1341
13-Nov	PHFB	0	0	117	1002	0	0	0	0	0	0	0	0	0	0	0	0	0	0	0	41 92	1252
13-Nov	SWFB	0	0	616	444	0	0	0	0	0	0	0	0	0	0	0	0	0	0	0	0	1060
13-Nov	PH1	0	1	0	0	7	1	0	0	0	0	0	0	0	0	0	0	0	0	0	0	9
13-Nov	PH2	0	0	0	0	0	0	0	0	0	0	0	0	0	0	0	0	0	0	0	0	0
13-Nov	PH3	0	0	0	0	0	0	0	0	0	0	0	0	0	0	0	0	0	0	0	0	0
13-Nov	SW1	0	0	0	0	2	0	0	0	0	0	0	0	0	0	0	0	0	0	0	0	2
13-Nov	SW2	0	0	0	0	0	0	0	0	0	0	0	0	0	0	0	0	0	0	0	0	0
13-Nov	SW3	0	0	0	0	0	0	0	58	0	0	0	0	0	0	0	0	0	0	0	0	58
Avg/Survey		1		1090		5		29		0		0		0		0		0		67		2381
14-Nov	PHFB	0	0	0	0	0	0	11	36	0	0	0	0	0	0	0	0	0	0	0	133 49	229
14-Nov	SWFB	0	0	88	619	0	0	0	0	0	0	0	0	0	0	0	0	0	0	0	0	707
14-Nov	PH1	0	17	0	4	5	3	0	0	0	0	0	0	0	0	0	0	0	0	0	0	29
14-Nov	PH2	0	0	0	8	0	0	0	0	0	0	0	0	0	0	0	0	0	0	0	0	8
14-Nov	PH3	0	0	0	0	0	0	0	0	0	0	0	0	0	0	0	0	0	0	0	0	0
14-Nov	SW1	0	0	0	0	7	0	0	0	0	0	0	0	0	0	0	0	0	0	0	0	7
14-Nov	SW2	0	0	0	0	0	0	0	34	0	0	0	0	0	0	0	0	0	0	0	0	34
14-Nov	SW3	0	0	0	0	0	0	0	0	0	0	0	0	0	0	0	0	0	0	0	0	0
Avg/Survey		9		360		8		41		0		0		0		0		0		91		1014
Totals	Gulls				Cormorant				Caspian tern				White Pelican				Grebe				Total	
	F		NF		F		NF		F		NF		F		NF		F		NF			
Weekly Total	1307		15214		84		323		0		0		0		0		69		1179		18176	
Avg/Survey	93		1087		6		23		0		0		0		0		5		84		1298	

John Day Dam  
Avian Zones



## John Day Weekly Averages

	Temp:	Secchi:	Fallbacks
Sun	55	6.0	
Mon	54	6.0	
Tue	54	6.0	
Wed	53	6.0	
Thur	53	6.0	
Fri	53	6.0	
Sat	52	6.0	
<b>AVG:</b>	<b>53</b>	<b>AVG: 6.0</b>	<b>AVG</b>
			<b>MAX 0</b>
			<b>MIN 0</b>

	NE1	NE2	S.Ent	SE1	N.Ent	JBS Diff	Bay19
Sun	8.0	8.0	1.4	8.8	1.3	4.5	1.3
Sun	8.5	8.5	1.7	8.5	1.3	4.6	1.2
Mon	8.2	8.2	1.4	9.5	1.4	4.6	1.4
Mon	8.1	8.1	1.4	9.5	1.5	4.5	1.4
Tues	8.3	8.3	1.7	8.5	1.5	4.5	1.2
Tues	8.2	8.0	1.7	8.4	1.7	4.5	1.2
Wed	8.2	8.2	1.8	8.5	1.5	4.5	1.1
Wed	8.1	8.1	1.8	8.6	1.5	4.5	1.2
Thur	8.2	8.4	1.7	8.6	1.5	4.8	1.1
Thur	8.1	8.1	1.0	9.4	1.6	4.5	1.3
Fri	8.1	8.3	1.7	8.4	1.4	4.7	1.2
Fri	8.2	8.1	1.7	8.7	1.6	4.5	1.2
Sat	8.2	8.1	1.6	8.8	1.6	4.6	1.2
Sat	8.2	8.0	1.4	8.6	1.7	4.6	1.1
<b>AVG:</b>	<b>8.2</b>	<b>8.2</b>	<b>1.6</b>	<b>8.8</b>	<b>1.5</b>	<b>4.6</b>	<b>1.2</b>